



WDMX Serial

Compact 4ch Data driver
For wireless DMX receiver

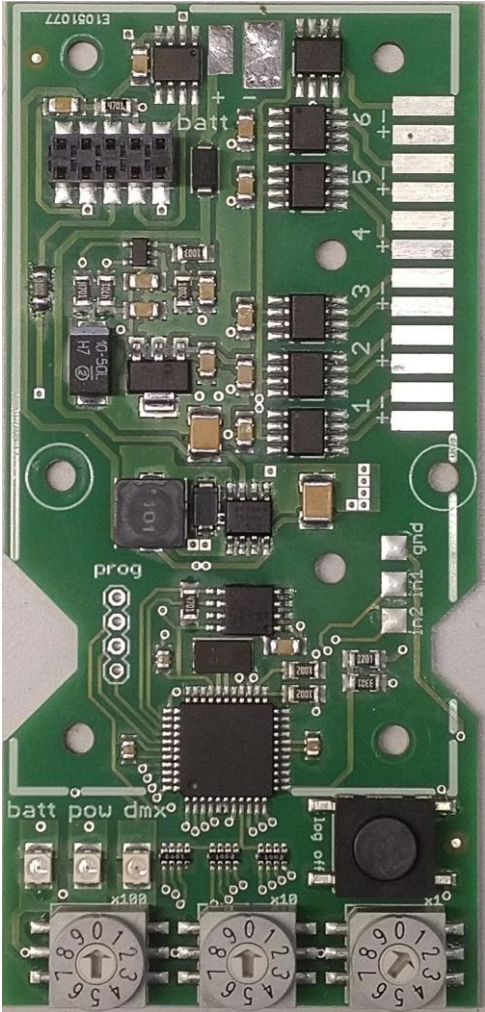
Ordercode: 10101

CONTENT

| | | |
|----------|-----------------------------------------|-----------|
| 1 | PICTURE..... | 3 |
| 1.1 | GENERAL..... | 3 |
| 2 | ELECTRICAL SPECIFICATIONS..... | 4 |
| 2.1 | ELECTRICAL SPECIFICATIONS | 4 |
| 2.2 | LED INDICATION | 4 |
| 2.3 | CONNECTIONS | 5 |
| 2.4 | CONNECTORS..... | 6 |
| 3 | MECHANICAL SPECIFICATION | 7 |
| 3.1 | DIMENSIONS AND WEIGHT | 7 |
| 4 | OPERATING INSTRUCTIONS..... | 8 |
| 4.1 | DMX ADDRESS | 8 |
| 4.2 | INPUTS..... | 8 |
| 5 | WIRELESS DMX..... | 9 |
| 5.1 | WIRELESS DMX | 9 |
| 6 | WARRANTY | 10 |
| 6.1 | APPLICATION OF WARRANTY | 10 |
| 6.2 | RMA PROCEDURE..... | 12 |
| 7 | USED LIST OF ABBREVIATIONS | 13 |

Picture

1.1 General



WDMX Serial card

Electrical Specifications

2.1 Electrical specifications

9V DC to 12.6V DC with battery indicator for low battery

4 x data output

2.2 LED indication

batt pow dmx



BATTERY indication (red):

Shows the battery status

On : battery full

Flashing : battery almost empty

Two short flashes : voltage has been too low, restart device

POWER indication (red):

Shows the controller status

On : power and DMX OK or stand alone mode

Off : no power, or microcontroller is broken

Flashing : no DMX signal from WDMX module

Two short flashes : short-circuits detected, restart device

DMX indication (green):

Shows the Wireless receiver status

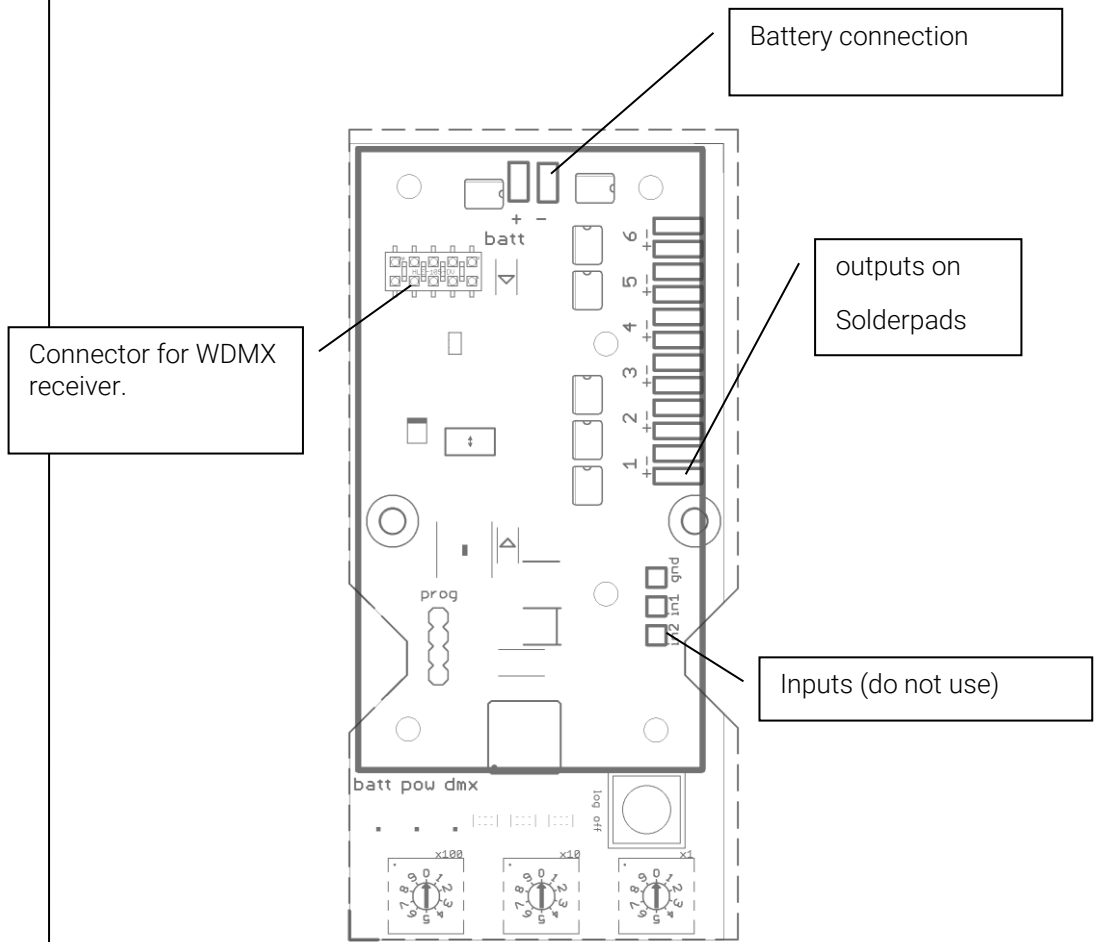
On : receiver is linked and receives DMX

Off : no power, not logged on or receiver is broken

Flashing : no connection with WDMX transmitter

Short off : WDMX transmitter found, but no DMX input

2.3 Connections

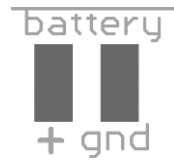


2.4 Connectors

3 solder pads for the battery and stabilized supply (check polarity)

3 solder pads for the inputs (do not use)

4 solder pads for the outputs to the LEDs



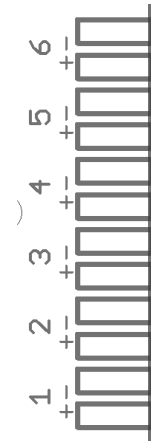
1+ : channel 1

2+ : channel 2

3+ : channel 3

4+ : channel 4

All other: do not use



Mechanical Specification

3.1 *Dimensions and weight*

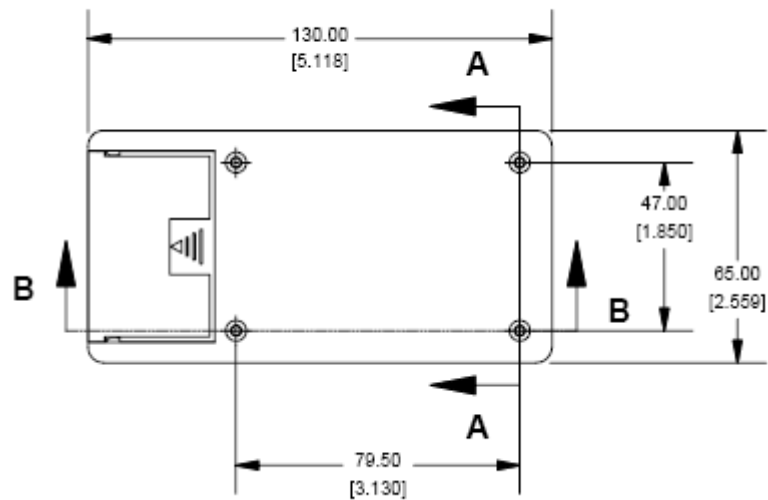
(LxBxH) 107mm x 50mm x 11mm

driver without WDMX receiver : 26 g

driver with WDMX receiver : 40 g

Fits in HAMMOND 1599BBAT housing (Farnell 1426567)

Top View of Assembly

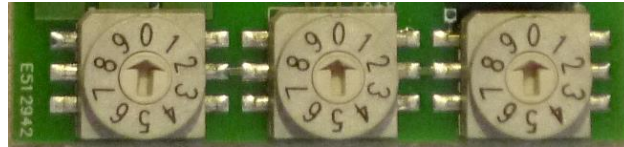


Operating instructions

4.1 DMX Address

Rotary switches are used to set the DMX channels

The LEDdriver will listen to the DMX signal if the address is between 001 and 511. DMX address of the output can be selected by the three rotary switches.



4.2 Inputs

The LEDdriver has two (trigger) inputs. Do not connect the inputs when the LEDdriver is used in DMX mode. In standalone mode, the inputs can be connected to a potential free contact like a switch, relais or open collector output. Please contact Lux Lumen if you need more information about the trigger inputs.

Wireless DMX

5.1 Wireless DMX

This module offers a wireless solution to receive DMX data. This gives more freedom than a hardwired DMX data link when building point-to-point and point-to-multipoint installations over a large distance.

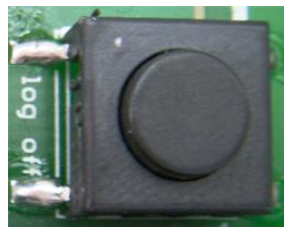
The configuration is very simple. All the receivers are automatically detected when the push button on the transmitter is pressed.



The WDMX transmitter will look for unlinked receivers when the transmitters function button is pressed shortly. The green LEDdriver WDMX status led will blink during the discovery.

The WDMX transmitter will log off all linked receivers when the transmitters function button is pressed for 5 seconds. The green LEDdriver WDMX status led will blink and then extinguish

A single receiver can be logged off by pressing the receivers function button for 5 seconds.



Warranty

6.1 Application of warranty

Warranty period

Warranty service is valid for one year from the date of purchase by the consumer, as evidenced by invoice date given out by your point of sale.

Warranty service

Service under warranty can only be done by Lux Lumen.

Coördinaties:

Lux Lumen
Kernenergiestraat 53 A
2610 Wilrijk
Belgium

Any cost of secure transportation of the WDMX serial to and from Lux Lumen service department, will be borne by the customer.

Limitations

Lux Lumen will not warrant the following:

- Periodic check-ups, maintenance and repair or replacement of parts due to normal wear and tear.
- Consumables
- Any software
- Defects caused by modifications carried out without Lux Lumen's approval.
- Damage resulting from the fact that a WDMX serial is not conforming to country specific standards or specifications in another country than the country of purchase.

Costs incurred by Lux Lumen's service center in making any adoptions or modifications of a WDMX serial necessary for country specific technical or safety standards or specifications, or any other cost to adjust the WDMX serial as a result of any specifications which have changed since the delivery of the WDMX serial.

Warranty service is excluded if damage or defects have been caused by:

Improper use, extensive use, handling or operation of the WDMX serial as referred to in the user manual or operator manual and/or relevant user documents, including without limitation, incorrect storage, dropping, excessive shocks, corrosions, dirt, water, or sand damage, if the WDMX serial is not rated to be used in severe conditions, indicated by its IP and IK degree, mentioned in the WDMX serial specifications in this manual.

Repairs, modifications or cleaning carried out by a non Lux Lumen service centre.

Use of spare parts, software or consumables, which are not compatible with the WDMX serial.

Connecting the WDMX serial to equipment not intended to be used with this WDMX serial.

Defects caused by improper condition of the power supply network.

Inadequate packaging of the WDMX serial when returning it under the RMA procedure.

Accidents or disasters or any cause beyond the control of Lux Lumen, including but not limited to lightning, water, fire, public disturbances, improper ventilation, and acts of god.

Others

It is the responsibility of the customer to backup and save any software files and programs before repair and to restore the same after such repair.

This warranty does not affect the consumer's statutory rights under applicable national legislation in force, nor the consumer's rights against the retailer arising from the sales/purchase contract. In the absence of applicable national legislation, this warranty will be the consumer's sole and exclusive remedy, and Lux Lumen cannot be liable for any incidental or consequential damages for breach of any express or implied warranty of this WDMX serial.

For full details of the warranty offered on this WDMX serial, please contact Lux Lumen's service center.

6.2 RMA procedure

To send material back to Lux Lumen, you need a RMA (Return Material Authorization) document that you will receive from Lux Lumen.

Without the RMA document, we cannot accept the material.

The procedure to obtain a RMA:

Step 1:

Customer contacts Lux Lumen about warranty, defects if material has to be returned.

Step 2:

Lux Lumen sends the customer a filled out RMA document (using a unique RMA number)

Step 3:

Customer sends material (include a copy of the RMA document with the material)

Step 4:

Lux Lumen evaluates the problem, and informs the client if repair is done under warranty, or makes an offer to the client for repair.

Step 5:

The procedure related to lux lumen quality procedures, according ISO 9001 is started up.

Used list of abbreviations

- AC: Alternating current
- DC: Direct current
- °F: Temperature in degrees Fahrenheit
- °C: Temperature in degrees Celsius
- LED: Light Emitting Diode
- CRI: Color Rendering Index
- RGBW: red green blue white
- FWHM: full width half measurement